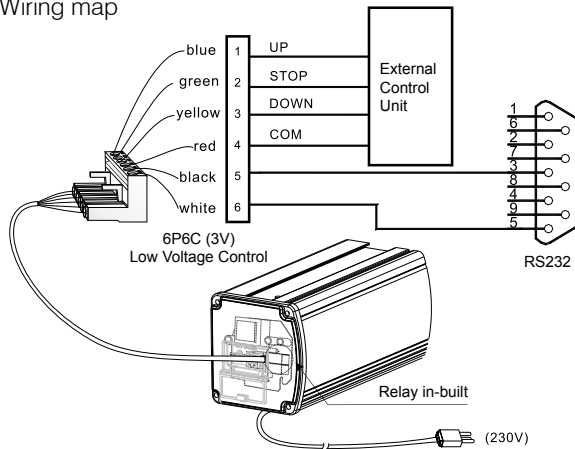


Central Control Instructions

Note: Please do not operate the low voltage control frequently to prevent from damage to the relay.

Wiring map



Central Control Protocol & Control Code

Data bits: 8 Digits

Initial digits: Digit 1

Stop digits: Digit 1

Baud rate: 2400

UP: 0xFF 0xEE 0xEE 0xEE 0Xdd

STOP: 0xFF 0xEE 0xEE 0xEE 0Xcc

DOWN: 0xFF 0xEE 0xEE 0xEE 0Xee

MICRO-UP: 0xFF 0xEE 0xEE 0xEE 0XC9

MICRO-DOWN: 0xFF 0xEE 0xEE 0xEE 0XE9

projectisle
.com.au

Where Projectors Roam Free



Excessive motor use

The motor will switch off if the screen is used continuously for more than three minutes. Allow the motor to cool for 30 minutes before using again.

If you do not expect to use your screen for some time, please disconnect the power.

Protecting your Screen:

To ensure long lasting viewing enjoyment keep the screen rolled up when not in use. Check both the front and back surfaces before retracting into the case to make sure it is free of dust, dirt, insects or other foreign matter. Use a soft brush or cloth to lightly remove any foreign particles.

Cleaning your Screen:

Use warm water with a mild detergent to remove any marks on the surface (only dab, do not rub) or screen casing. Immediately dry the screen with a soft cloth or towel. Do not leave it to air dry.

Never use any solvents, chemicals or abrasive cleaners on the screen surface as they can permanently damage the screen surface.

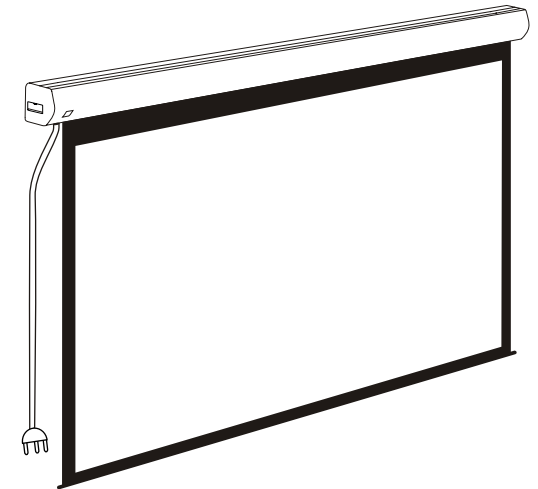
Note: Warranty does not cover un-installing or re-installing unit.

For more information please go to
www.projectisle.com.au
or call 1300 88 11 79

Oct12 v1.5



GRANDVIEW®



**Grandview Smart Screen
User Manual**

To the owner

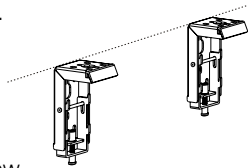
Congratulations on purchasing a Grandview Smart Screen, This screen is designed to produce the sharpest, most pleasing pictures with maximum convenience.

Before you start

- Use the correct tools: a level, a measuring tape and a pencil to mark with.
- Measure the bracket position accurately before attaching to the wall or ceiling.
- Do not mount the brackets the full width of the casing, allow at least 100mm at each end for horizontal picture alignment.

Wall mount

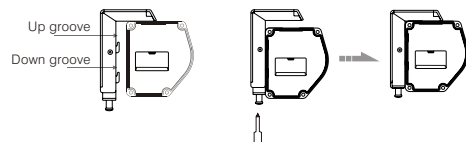
Mount the brackets firmly eg: into wall studs or bricks. Ensure the brackets are in level.



Undo the screen as shown below.

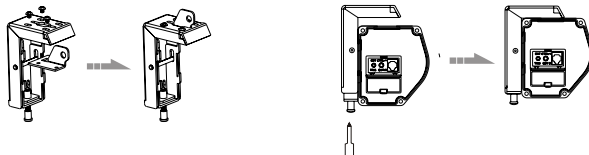


Slide the screen onto the brackets and snap into the groove and tighten the screw.

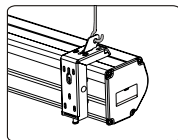


Ceiling installation

Attach the ceiling brackets as shown. Slide the screen and lock



Ensure the wall bracket is secured to the casing of the screen before hanging.



Caution:

Before operating the screen you must remove the white adhesive tape which holds the dropper bar to the screen case.

Electrical installation

Grandview Smart Screens come with an Australian standard plug. Simply plug in and your screen is ready to use.

Operating Instructions Using IR Remote

Your remote control comes with a battery installed.

To operate your remote:

Press ▲ to lift the screen

Press ● to stop the screen

Press ▼ to lower the screen

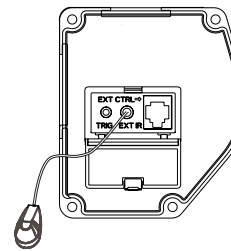
▲▼ The Micro switch is used for retracting or lowering screen in small increments.



Alternatively you may also use the external IR receiver cable and sensor.

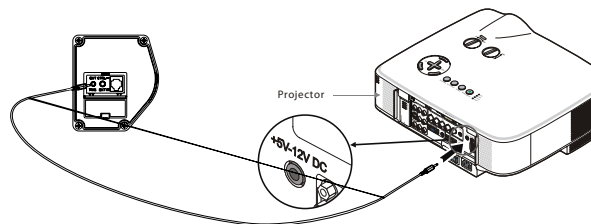
Plug the IR receiver cable into the IR socket on the casing and mount the sensor in line of sight with the remote.

Now use the remote to lower and retract the screen.



Using 12V Trigger:

Connect the projector and screen with the jack plug cable provided. Turn "ON" the projector and choose 12V from the menu, the screen will lower. When the projector is turned "OFF" the screen will retract into the casing.



Limit settings

The screen is fitted with 2 limit pots which are visible on the left hand side of the motor. The **YELLOW** pot controls the up or down movement of the screen's **TOP** limit and the **WHITE** pot controls the up or down movement of the **BOTTOM** limit.

Setting the top limit

The **YELLOW** pot is covered with a **BLACK** sticker to prevent accidental insertion of the **HEX** key which may lead you to inadvertently change the **TOP** limit and damage the screen.

DO NOT REMOVE THE BLACK STICKER OVER THE YELLOW POT UNDER ANY CIRCUMSTANCE – IT WILL VOID YOUR WARRANTY.

Setting the bottom limit

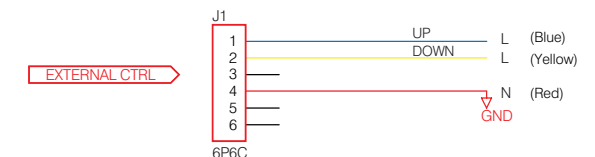
CAUTION: Setting the bottom limit beyond the black leader may render your screen inoperable and void your warranty.

To access the **WHITE** pot, please remove the rubber grommet beneath the motor on the left-hand side of the case. Operate the screen to it reaches the bottom limit. Insert the **HEX** key into the **WHITE** pot and turning it **CLOCKWISE**. The screen will visibly drop by approximately 15mm steps for each rotation of the key.

To raise the **LOWER** limit, operate the screen to it reaches the bottom limit. Insert the Hex key into the **WHITE** pot and turn it **COUNTER-CLOCKWISE**. The bottom limit will rise by approximately 15mm for each rotation of the key **HOWEVER** the new limit will only be visible **AFTER** the screen has been operated (raised and then lowered again).

Using close contact

Simply connect the Blue and Yellow wires to 'L' of control system, and the red wire to 'N'. Then using commands in the control system, screen will open and close to it's pre-set limits.



Dry contact for Central control like AMX or Crestron
UP and Down connect with L of Central control
GND connect with N of central control